

Op18 (phospho Ser16) Polyclonal Antibody
Catalog # AP67129**Specification**

Op18 (phospho Ser16) Polyclonal Antibody - Product Information

Application	WB, IHC-P, IF
Primary Accession	P16949
Reactivity	Human, Mouse, Rat
Host	Rabbit
Clonality	Polyclonal

Op18 (phospho Ser16) Polyclonal Antibody - Additional Information**Gene ID** 3925**Other Names**

STMN1; C1orf215; LAP18; OP18; Stathmin; Leukemia-associated phosphoprotein p18; Metablastin; Oncoprotein 18; Op18; Phosphoprotein p19; pp19; Prosolin; Protein Pr22; pp17

Dilution

WB~~Western Blot: 1/500 - 1/2000. Immunohistochemistry: 1/100 - 1/300. Immunofluorescence: 1/200 - 1/1000. ELISA: 1/10000. Not yet tested in other applications.

IHC-P~~N/A

IF~~1:50~200

Format

Liquid in PBS containing 50% glycerol, 0.5% BSA and 0.09% (W/V) sodium azide.

Storage Conditions

-20°C

Op18 (phospho Ser16) Polyclonal Antibody - Protein Information**Name** STMN1**Synonyms** C1orf215, LAP18, OP18**Function**

Involved in the regulation of the microtubule (MT) filament system by destabilizing microtubules. Prevents assembly and promotes disassembly of microtubules. Phosphorylation at Ser-16 may be required for axon formation during neurogenesis. Involved in the control of the learned and innate fear (By similarity).

Cellular Location

Cytoplasm, cytoskeleton.

Tissue Location

Ubiquitous. Expression is strongest in fetal and adult brain, spinal cord, and cerebellum, followed

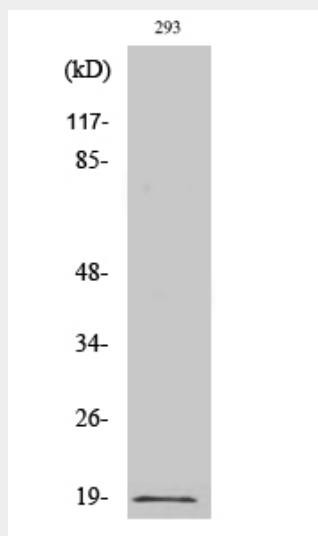
by thymus, bone marrow, testis, and fetal liver. Expression is intermediate in colon, ovary, placenta, uterus, and trachea, and is readily detected at substantially lower levels in all other tissues examined. Lowest expression is found in adult liver. Present in much greater abundance in cells from patients with acute leukemia of different subtypes than in normal peripheral blood lymphocytes, non-leukemic proliferating lymphoid cells, bone marrow cells, or cells from patients with chronic lymphoid or myeloid leukemia.

Op18 (phospho Ser16) Polyclonal Antibody - Protocols

Provided below are standard protocols that you may find useful for product applications.

- [Western Blot](#)
- [Blocking Peptides](#)
- [Dot Blot](#)
- [Immunohistochemistry](#)
- [Immunofluorescence](#)
- [Immunoprecipitation](#)
- [Flow Cytometry](#)
- [Cell Culture](#)

Op18 (phospho Ser16) Polyclonal Antibody - Images



Op18 (phospho Ser16) Polyclonal Antibody - Background

Involved in the regulation of the microtubule (MT) filament system by destabilizing microtubules. Prevents assembly and promotes disassembly of microtubules. Phosphorylation at Ser- 16 may be required for axon formation during neurogenesis. Involved in the control of the learned and innate fear (By similarity).